

Gouge for those attending their first Key West come-around

(Key West old salts are also welcome to read in case they want to refresh or are experiencing “senior moments”)

Lots of detail to consume, with our apologies!

Table of Contents

Topic	Page
Overview	1
Pre-trip Preparations	2
Driving to Key West	2
Arriving in Key West and In-town Driving Directions	2
Access to NAS Truman Annex and beach camping facility	5
Camping	6
What to bring	9
Miscellany and tips	10

Key West Come Around overview

- Theme for Key West 2019 is **Fun, Fellowship, Memories**.
- The Key West Come Around has unique issues for newcomers. Prior planning is essential.
- The campground is on Naval Air Station Key West (NASKW) property within Truman Annex. Truman Annex is now a neighborhood of residential units, National Park site, Coast Guard facility, Municipal Amphitheater and Park as well as the Naval facility.
 - The campground is part of an NASKW MWR (Morale Welfare and Recreation) beach recreation area. This is a secure Navy facility requiring privilege to access.
 - RV camping at this facility is ‘dry camping’, i.e. no hook ups.
 - Campers may use the potable water and dump station facilities at both the Sigsbee and Trumbo campgrounds.
 - These facilities provide a convenient opportunity if you need to dump tanks and/or take on/top off potable water before arriving at the Truman Annex campsite
 - Directions to each are provided later in this gouge sheet.
 - See “[Camping](#)” section below for details.
- Several meals, Happy Hours and activities will be at the Come Around site under a large tent.
- Several organized meals and/or activities will be off-site.
- A schedule for the entire week is published in a separate document.
- You can participate in as many or as few activities as you desire.
- Expected Expenses
 - Chapter Come Around fee - assessed to cover expenses incurred to conduct the events, e.g. tent, table and chair rental; meals or entertainment if provided, other rentals and purchases necessary; etc. The fee is usually in the range of \$75-\$100 per person. Personal checks are accepted.
 - MWR daily camping fees - see “[Campsite fees](#)” sub-bullet in the Camping section.
 - Fees associated with certain optional activities, e.g. golf fees, Sunset Cruise, group lunch, etc.
 - Personal expenses associated with activities designated “own your own”.
- The Key West Come Around usually has about 20 – 25 RVs. Sometimes we have non-RVers who stay off-site and join us for activities.
- Weather
 - Less than paradise-like weather conditions, i.e. cold and/or rainy, are possible.
 - Packing appropriate inclement weather attire strongly recommended.

Pre-trip preparations

- Register for event with the Firsties (Everyone)
- Make reservations with [Navy Getaways Campground](#) if planning to stay at either NASKW Trumbo or Sigsbee campgrounds in conjunction with come-around (applicable only to members with DOD-issued ID cards)
- Plan the route to Key West, check maps and satellite images of Key West
- Print these guidelines and share with fellow campers
- Pack your chapter or class reunion name tags. We do have stickers for guests and forgetful grads.
- Load aboard as recommended for food, clothes and activities – see [What to bring](#) section for details.

Driving to Key West

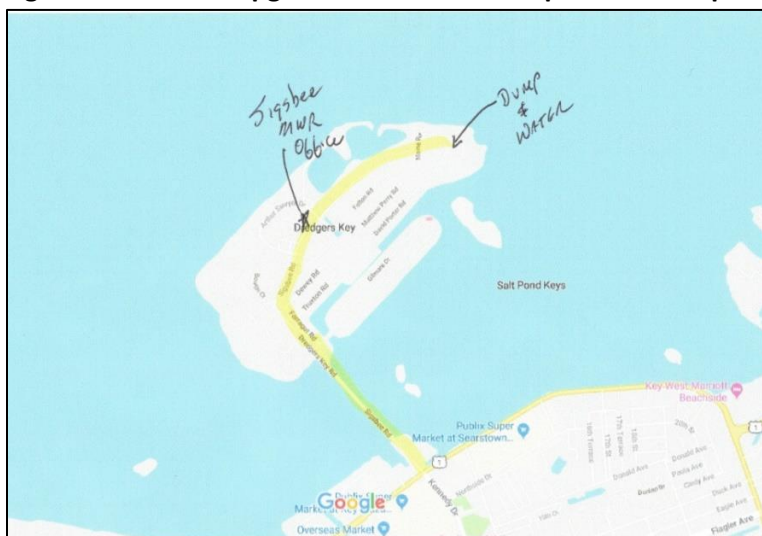
- **The night before** departing the mainland campers often use the [Miccosukee Resort & Casino](#)
 - RV friendly overnight lodging facility enroute to Key West.
 - Convenient and affordable, excellent jumping off site for final leg of journey!
 - Located along SR 997 just north of intersection with US 41.
 - Dry camping in designated area – no charge.
 - **Must** obtain parking pass from inside the Casino at the security counter to visibly display.
 - Key West “newbies” are encouraged to place something USNA related in their rig’s front window so they may be easily recognized by other chapter members who are heading to the come-around. This provides opportunity for early welcome and any additional late-breaking and/or miscellaneous “gouge” before they proceed down the overseas highway to Key West.
 - Scuttlebutt says it wise to arrive no later than 1630, after which designated parking area is known to sometimes fill quickly.
- **The day of travel to Key West**
 - It is recommended that you refuel or top off on the mainland.
 - Allow a travel time of 3 hours on the mostly 2 lane highway through the Keys and pay attention to the speed limits.
 - All campers may proceed directly to the Truman Annex campsite.
 - Many will want to stop at MWR Sigsbee campground to prepare on-board tanks for extended dry camping.

Arriving in Key West and In-town Driving Directions

- **Notes:**
 - In Key West street names are often painted on sign or light posts.
 - There always seems to be street construction somewhere in Key West. While the directions below are accurate, *they will be verified via on-scene route reconnaissance several days prior to come-around starting date. Changes, if any, will be broadcast to attendees.*
 - Southbound on US 1 – monitor your speed as you come off the bridge approaching mile marker 35, someone is often “taking pictures” as you exit the bridge.
- **Traveling directly to Truman Annex**
 - Large rigs and rigs towing (see Figure 1 below, red dots on yellow line)
 - Turn left onto South Roosevelt Blvd at the stop light as you enter Key West,
 - Take South Roosevelt to Flagler Ave (stop light),
 - Turn right onto Flagler and follow it to White St (stop light),

- **Traveling to NAS Key West Campground Office and dump station/ potable water facilities at Sigsbee from US 1 (do not follow GPS if driving a large rig or towing)**
 - Google Maps, GPS, etc. will likely show a more direct route to the NASKW MWR Campground Office at Sigsbee as you enter Key West. This route would be via N. Roosevelt from US 1 (right turn onto N. Roosevelt at the stop light as you enter Key West). While the directions are accurate the right turn into Sigsbee from N. Roosevelt Blvd is extremely tight for larger rigs or rigs towing.
 - Large rigs and rigs towing (better route)
 - Turn left onto South Roosevelt Blvd at the stop light as you enter Key West.
 - Take South Roosevelt to Flagler Ave (stop light).
 - Turn right onto Flagler and follow it to Kennedy Dr (stop light)
 - Turn right onto Kennedy and follow it straight into Sigsbee and NAS gate.
 - Follow guidance in **All rigs (Sigsbee)** bullet below.
 - Cars and smaller rigs without tow
 - Turn right onto North Roosevelt Blvd at the stop light as you enter Key West.
 - Continue on North Roosevelt to Kennedy Dr (stoplight, Ibis Resort on your right)
 - Turn right at stoplight and proceed to NAS gate.
 - Follow guidance in **All rigs (Sigsbee)** bullet below.
 - All rigs (Sigsbee)
 - After entering Sigsbee bear right where the road splits. There should be signs pointing toward the Commissary and Navy Exchange.
 - Follow the signs, pass the NEX gas station to the MWR Campground office on the left (Building V-4113, across street from Commissary).
 - Additional notes:
 - **The speed limit on base is strictly enforced.**
 - While on Sigsbee, topping off fuel, emptying grey and black tanks, topping off fresh water is highly recommended for the extended dry camping experience. Continue past the MWR Campground office and NEX to the campground at the end of the road. In the center of the campground is the bath house. There are two-way dump stations aside of the bath hose and fresh water facility diagonally across the intersection. See Figure 2 below.

Figure 2. MWR Campground office and dump station and potable water facilities (Sigsbee)



- **Traveling from Sigsbee to Truman Annex**

- Large rigs and rigs towing
 - Exit Sigsbee and proceed straight through the stoplight at N. Roosevelt Blvd onto Kennedy Dr to the intersection with Flagler Ave. (stoplight)
 - Turn right onto Flagler and follow the **In Town (Traveling directly to Truman Annex)** directions described above for large rigs and rigs towing.
- Cars and smaller rigs without tow
 - Exit Sigsbee and turn right at stoplight onto N. Roosevelt Blvd. (Note: This turn can be tight for larger units if there are cars in the left turn lane northbound on N. Roosevelt).
- Follow the **In Town (Traveling directly to Truman Annex)** directions to Palm Ave described above cars and smaller rigs without tow.

Access to NAS Truman Annex and beach camping facility

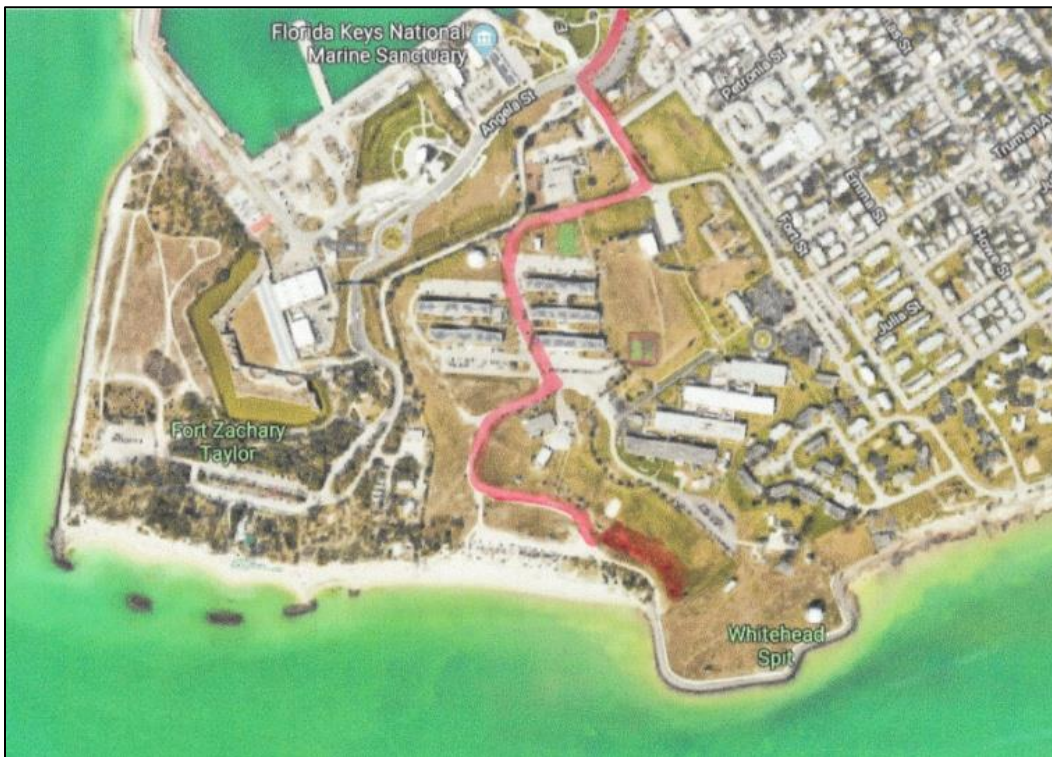
- Participants who have DOD Issued ID card – your ID card is sufficient for access to the camping site.
- Participants who do not have DOD issued ID card
 - Background check will be required for all event participants not having a DOD-issued ID card. This includes any guest(s) of a person having a DOD-issued ID card.
 - Upon satisfactory completion of background check, participant's name will be added to the list of event participants approved for access to designated areas of NAS Key West (NASKW), e.g. Truman Annex and Sigsbee and Trumbo campground facilities.
 - Participants not holding a DOD-issued ID card will be required to present driver's license to the sentry at the gate, sentry will check name on driver's license against list of participants not having DOD-issued ID card who are approved for base access to designated areas.
 - Key West Come Around Firstie, Tom Wolfe '70 (co-firstie), will collect required personal data for those impacted participants and coordinate completion of required background check with MWR/NASKW Security.
- Other-than-camping Guest(s)
 - If you do invite guests to a happy hour or to stop by, please advise the Firsties or a Board member in advance of their arrival.
 - If guest(s) do not have DOD-issued ID card, a sponsor for the guest(s) is required for the guest(s) to be granted access to the NASKW facility at Truman Annex. If you do not have a DOD-issued ID card yourself, you will need to get a sponsor for your guest(s) who has a DOD-issued ID card.
 - Please introduce your guest(s) to the group.

Camping

- Location –
 - vacant field at the Truman Annex Beach (see red shaded area in Figure 3 below).
 - Being able to camp at Truman Annex is both a treat and privilege. The USNA Alumni Association RV Chapter is one of only a small number of groups allowed to camp there overnight.
 - You can watch cruise ships arrive and depart and enjoy the small beach. (In the past Cuban refugees have been known to come ashore at night!)
 - Campsite is within easy walking distance of downtown Key West.



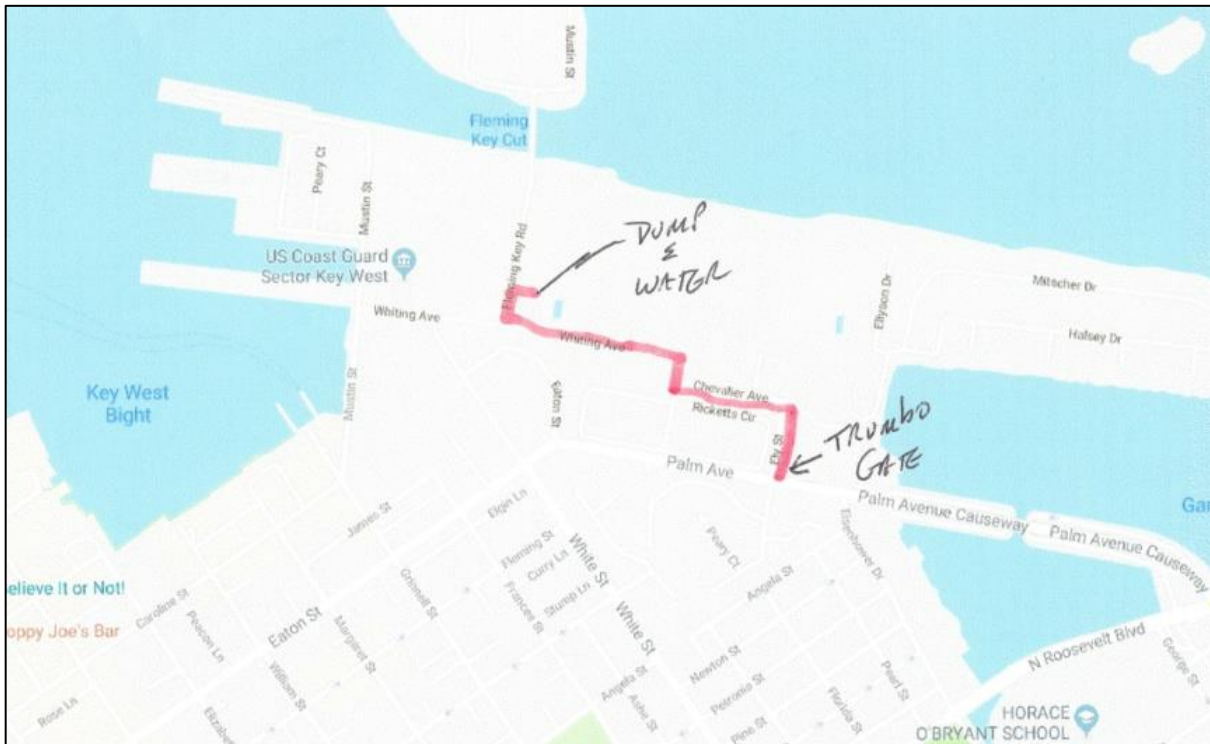
Figure 3. Campsite at Truman Annex beach



- Dry camping – no hookup facilities
 - Clean restroom and shower facilities and a nice gym are available at the Truman Annex Fitness Center.
 - Fitness Center is located ~75 yards from the campsite.
 - The restroom and shower facilities are available 24x7 for our group.
 - Generators
 - Can be run except during “Quiet Hours” (10pm - 07am). There are no quiet hours police, just common sense and consideration for fellow campers.
 - Vertical exhaust pipes (often referred to as Gen-turi) – in the interest of both common sense and consideration for fellow campers, let’s all ensure that we have the ability to direct the exhaust from our on-board generators away from our next-door neighbors’ entry door and immediate surroundings.

- Strongly recommend arriving with your fresh water tank full and your gray and black tanks empty.
- Potable water and dump facilities are available at both the Sigsbee (Figure 2) and Trumbo (Figure 4) campgrounds if a middle of Come Around servicing is needed.

Figure 4. Trumbo campground dump station and potable water facilities



- Campsite/vehicle registration and fees
 - All event participants, except as stated in “Exception” bullet below, must pre-register with NASKW MWR for this event. **This is a change from NASKW MWR policy in prior years.**
 - Pre-registration and payment of campsite fees to be accomplished via the following process:
 - Chapter to provide NASKW MWR POC (hereafter referred to as MWR POC) with roster of all event participants who will be camping at the Truman Annex campsite. Event firsties to take ownership of this action item.
 - The MWR POC will prepare pre-registration documentation for each camping unit occupying a site, as required, to include method of payment as Follows:
 - If camper’s data already exists in MWR data base, the MWR POC will use that data to pre-register the participant.
 - If camper’s data does not exist in MWR data base, the MWR POC will contact camper to obtain required data. Mode of contact may be via either email or telephone, or both.
 - The MWR POC will bring all pre-registration documentation to the Truman Annex campsite for camper’s to sign. Date/time/specific location for this activity to be coordinated by firsties (likely 1500, Mon, 4 Feb, at the tent).
 - Campers are permitted to drive directly to the campsite at the Truman Annex.
 - There is no requirement for campers to visit the Campground Office at Sigsbee for the purpose of registering for their campsite unless they should arrive after the MWR POC has completed the pre-registration document signing exercise at the Truman Annex campsite as cited above.
 - Those who arrive after the MWR POC has completed the pre-registration document signing activity as cited above will need to visit the MWR Campground office at Sigsbee at their earliest opportunity to complete their registration.

- **Exception to pre-registration process cited above** – pertains to campers having previously registered to camp at either the Sigsbee or Trumbo campgrounds either before or after the come-around and for whom registration at respective campground overlaps with the come-around dates.
 - If relocating to the Truman Annex campsite during the come-around, duplicate registration is not required.
 - To maintain reservation in either Sigsbee or Trumbo respective queues while relocating to the Truman Annex campsite during the event, camper is responsible for informing the Campground Office at time of registration of planned transfer to the Truman Annex site.
- All vehicles are required to register in order to access the facility.
 - Vehicle registration will be included in the pre-registration process.
 - “All vehicles” means just that - all vehicles, e.g. RVs, towed vehicle, motorcycles, etc.
 - The usual vehicle information, e.g. vehicle’s VIN, license plate number, proof of valid registration and proof of insurance is required to register the vehicle for access to the facility.
- Campsite fees as of 2019:
 - DOD ID card holder - \$17/night
 - Non-DOD ID card holder - \$21/night
 - Payment can be made via either a valid credit card or cash. Personal checks are not accepted.
 - Payment via credit card can be accomplished via the pre-registration process cited above.
 - Event participants who prefer to pay with cash or who do not wish to provide credit card information concurrent with the pre-registration process cited above will be required to visit the Campground Office at Sigsbee (Building V-4113, across from Commissary) to make payment. The Campground Office hours are 09am – 3pm (M – F).

What to bring:

- name tags
- Food items to share
 - 1 light snack for the Sunset Cruise (cruise participants only).
 - 2 appetizers for Happy Hour – see FINAL Plan of the Week for assignments.
 - 1 light lunch fare for pot luck lunch (date TBD but likely Friday (Suggestions: various salads, mac and cheese, salmon croquettes, quiche, stuffed mushrooms, etc.)
 - 1 side or dessert for the fish fry (date TBD but most likely Saturday), BYO meat if you don't eat fish.
 - Favorite tailgate dish(s) for the potluck dinner (date TBD but most likely Tuesday).
 - 1 Sunday brunch dish (Suggestions: egg casserole, quiche, scrambled eggs, pancakes, bacon, sausage, hashbrowns, toast, sweet rolls, donuts, muffins, fruit, Mimosas, Bloody Marys, etc.).
- RV items and non-RV things for the white elephant auction that you know your shipmates are just dying to own. Proceeds from the auction benefit the chapter. Remember - one person's "junk" is another person's treasure. \$\$\$\$ (checks accepted), reminder – you can't win at the auction if you don't bid!!!
- Books for free book exchange (not part of the white elephant auction)
- BYOB inventory, wine glasses, etc. for Happy Hour and any guests you may have in attendance
- Plates, cups, knives, forks and spoons
 - Firsties to provide for firstie dinner and morning refreshments on last day of come-around. Firsties also to provide small tasting cups for the blind wine tasting event.
 - Participants to provide for own use for all other on-scene eating activities, e.g. happy hours, pot lucks and fish fry. Participants to provide same for any guests you may have.
 - A limited supply of plastic cutlery and paper plates MAY be available.
- Camera/smartphone/tablet – remember...**memories!!!**

Happy Hour liquid refreshment is BYOB unless stated otherwise in the Plan of the Week.

- Food – all participants are asked to provide some appetizers, desserts and a potluck dish(s)
 - Specific details to be published in the event Plan of the Week.
 - See the **What to bring** section for additional information pertaining to food planning.
- Personal recreation equipment as desired, e.g., golf gear, diving gear, etc. – lots of opportunity to “play” in Key West – see “[Miscellany](#)” section re motorcycles on base.
- Navy paraphernalia (if you have any) for individual campsite and/or table decorations.
- Any USNA memorabilia you may wish to share with fellow participants.
- And last, but definitely not least...proper attitude for experiencing a week of **FUN, FELLOWSHIP AND MEMORIES!**

Miscellany

- Fuel Management in Key West
 - It is recommended that you leave the mainland with full fuel
 - Fuel is more expensive in the Keys (even at the NEX gas station) and there are good prices just before you enter the Overseas Highway.
 - Extended dry camping means running the generator to manage your battery charging and electrical needs. This will consume fuel.
- Grey tank management in Key West
 - It is recommended that you arrive at the campground with empty waste tanks and a full fresh water tank. There are convenient facilities at the Sigsbee campground to do this as you enter Key West enroute to the Truman Annex campsite. See “Traveling to NAS Key West Campground Office and dump station/ potable water facilities at Sigsbee” in
 - The grey water tank can be problematic.
 - If you are using the bath house for showers and toilet, the extended stay is quite manageable.
 - One tip that has come in quite handy is to use a plastic basin in your sinks to catch the grey water. Then empty the basin in your black water tank which will have extra capacity if you have minimized the toilet use. Every little bit helps.
- Fire ants
 - There is risk of the presence of fire ants at our camping location.
 - Some years are “riskier” than others.
 - Firsties will have fire ant repellent available for event participants as may be needed.
- Motorcycles on base
 - Must be registered per vehicle registration instructions cited in the “Campsite/vehicle registration and fees” section above.
 - Must comply with following safety considerations:
 - Motorcycle’s safety and signaling equipment fully operable.
 - Required PPE (personal protection equipment) for rider and passenger
 - DOT approved helmet
 - Appropriate eye protection
 - Gloves
 - Long sleeve shirt or jacket, i.e., arms fully covered
 - Long leg wear, i.e., legs fully covered
 - Closed toe shoes
 - Reflective vest (clothing) if riding on base at night
- Bicycles on base - persons riding bicycles, scooters, skateboards, etc. on base must be wearing following PPE:
 - Helmet on head and fastened.
 - Shoes, shirt and shorts or long pants.